



Stream UP Configuration:

FULL-SCALE ACQUISITIONS: NO MORE FORCED LIMITS

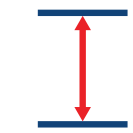
FEATURES AND BENEFITS



Modular Structure and light shell: logistics facilitated thanks to ease of assembly and transportation



Multi-frequency and double-polarization: Standard architecture and double polarization of the whole Stream family have been improved



Raised off the ground: the total absence of contact with the ground dramatically reduces stress on the system and system maintenance



Remote controlled: connection between Stream UP and the driver is fully wireless and managed by uMap, the brand-new acquisition software for large scale projects that allows to be always georeferenced thanks to real-time GPS and cartographic mapping



Faster acquisition speed: Stream UP acquisition speed and data quality is higher than ever with the new control unit eDAD-S



Approved by traffic laws: Even in transportation configuration the speed is not limited by system needs but only by local traffic speed limits

Supply Control Unit
Adjustable Height System
GNSS Antenna and Pole
Altimeter
GPR Array Modules



SYSTEM SPECIFICATIONS

OVERALL WEIGHT	95 kg [209.44 lb]	POSITIONING	GNSS, RTK, TPS
RECOMMENDED LAPTOP	Panasonic FZ55	NUMBER OF CONTROL UNITS	10 array modules + 1 Supply Control Unit
SUGGESTED ACQUISITION SPEED	Up to 60 km/h [37.3 mph]	MAXIMUM ACQUISITION SPEED	Up to 150 km/h [93.2 mph]
POWER CONSUMPTION	65 W (during acquisition)	POWER SUPPLY	12V car or external battery
RADAR COVERAGE	1.58 m [5.18 ft]	SYSTEM SIZE	1775 x 429 x 786 mm [69.9 x 16.9 x 30.9 in]
TOW BALL	50 mm ISO Standard	WATERPROOFING	IP65
SCAN RATE	9,230 scan/s @ 512 sample/scan	CONNECTOR TYPE	13-pin connector



Stream UP

The easiest way to capture underground utility assets



Flying, Agile, Smart, Timely, Easy to Use, Reliable.
FASTER than anything else.



IDS GeoRadar: The leader in multi-frequency and multi-channel Ground Penetrating Radar
www.idsgeoradar.com



Stream UP

Stream UP is a multi-channel, multi-frequency, double-polarized and lightweight GPR system dedicated to utility mapping of extensive areas that facilitates the whole mapping process both before, during and after acquisition.

EASY ASSEMBLY

The system is easily stackable and can be carried **on the acquisition vehicle** thanks to its **compactness**, greatly increasing its **transportability**. Stream UP is easy to assemble and can be moved to the survey location while attached to the rear of the vehicle at road traffic speeds with only 2 people needed for assembly and just one person to operate the system.

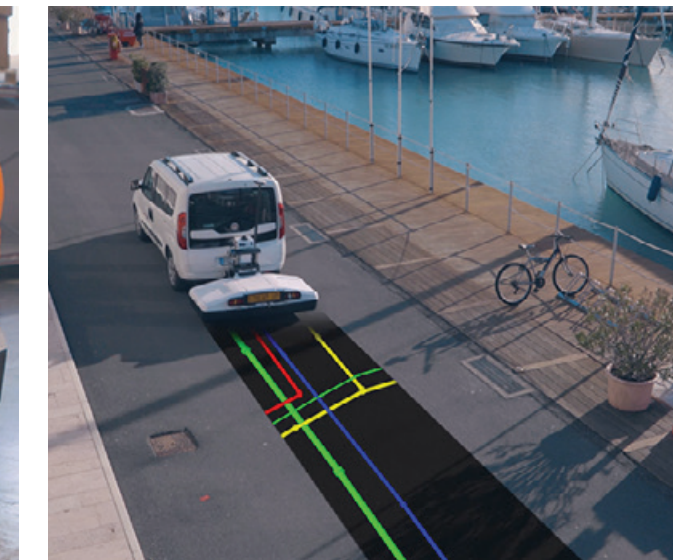
Easier than ever to assemble and to transport!



SUSPENDED IN DATA ACQUISITION

Stream UP is able to operate in **urban environment at high speed** (suggested speed is up to 60 km/h), without a bulky vehicle and **without ground contact**. Thanks to the new Control Unit eDAD-S, a densely packed array of antennas and dynamic stacking, excellent data quality has been maintained even at high speed.

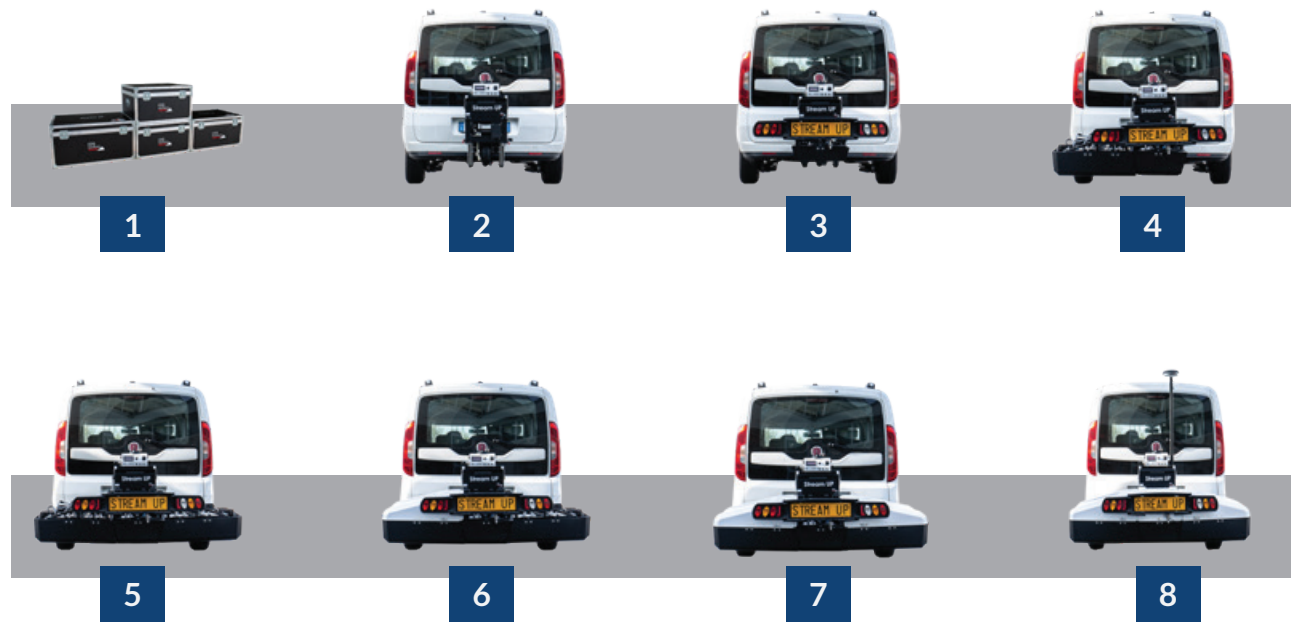
Furthermore, the innovative **suspended modular frame** is safer than ever thanks to a **protective shell structure** and **embedded anti-collision system**. Stream UP is compliant with traffic regulations and there is no need for an escort vehicle.



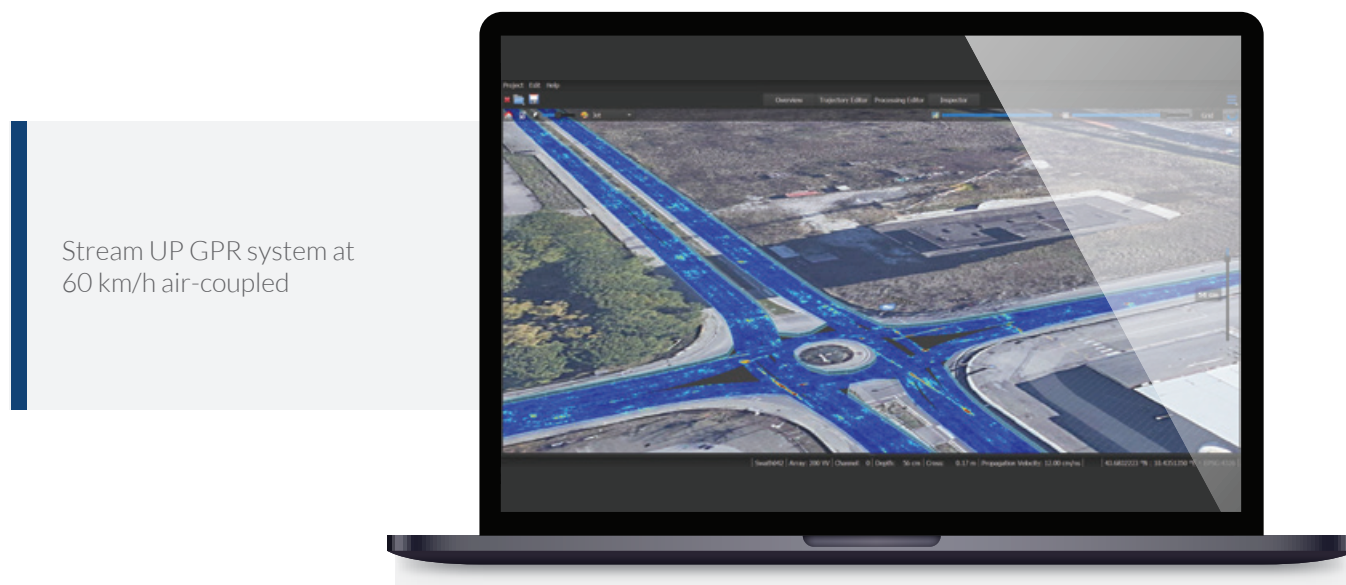
INNOVATIVE IN DATA PROCESSING

With IQMaps **post-processing and interpretation time** has been reduced, with the introduction of **real-time processing** and **3D visualization**. IQMaps provide a step by step approach to guide the user in performing the best and the quickest data analysis with the help of a customizable processing and analysis tool, enabling it to be used by both **skilled and no skilled users**.

EASY TO ASSEMBLE

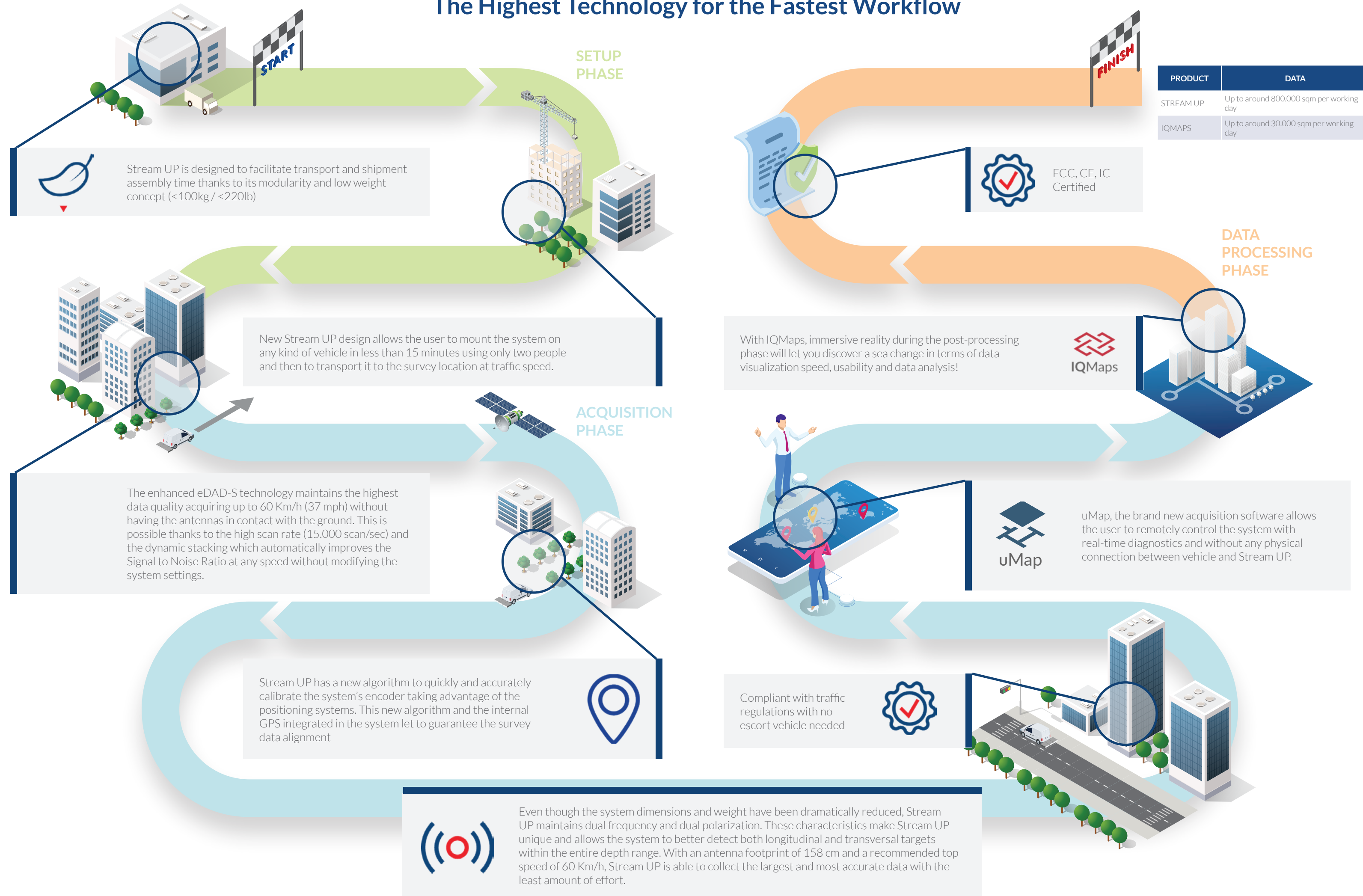


EXCELLENT DATA QUALITY EVEN AT HIGH SPEED

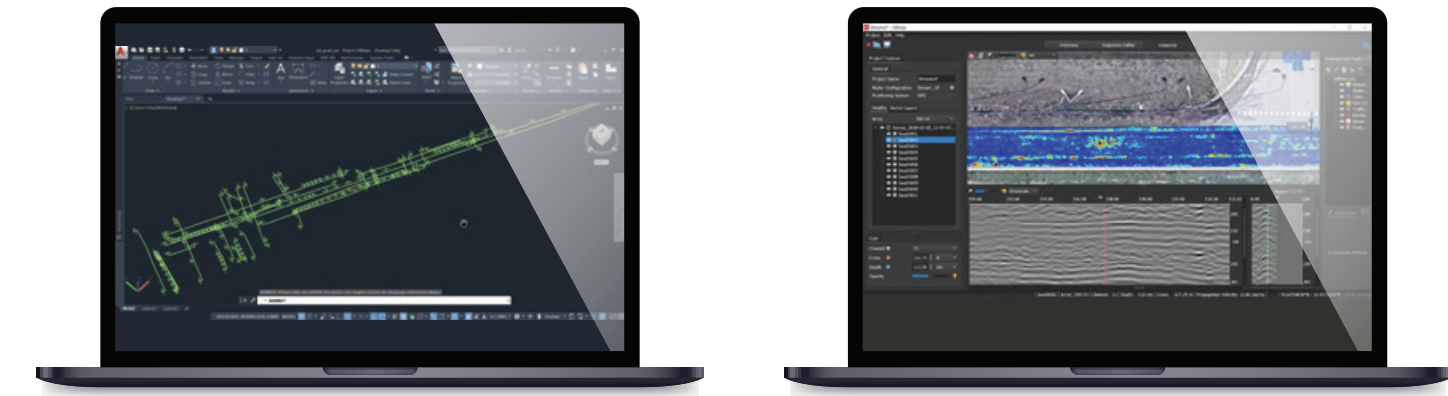


Stream UP GPR system at 60 km/h air-coupled

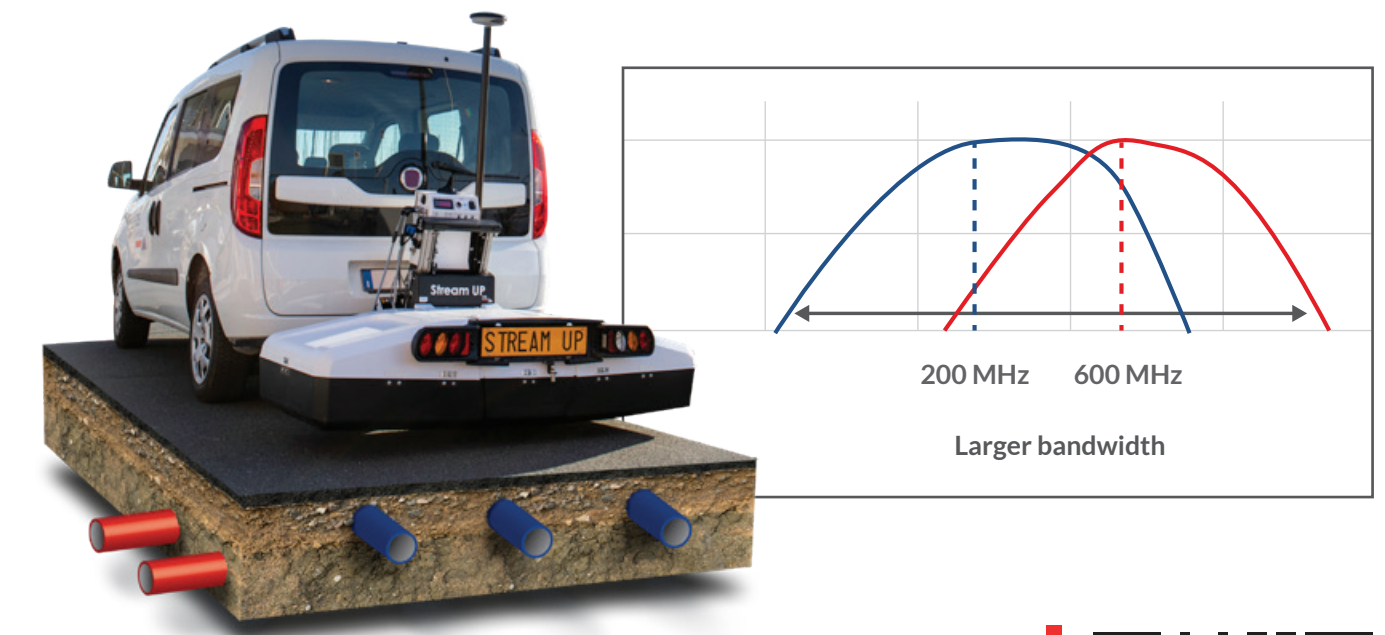
The Highest Technology for the Fastest Workflow



INNOVATIVE DATA PROCESSING THANKS TO IQMAPS



JUST ONE SCAN TO DETECT LONGITUDINAL AND TRANSVERSAL TARGETS



SCAN TO DISCOVER MORE

